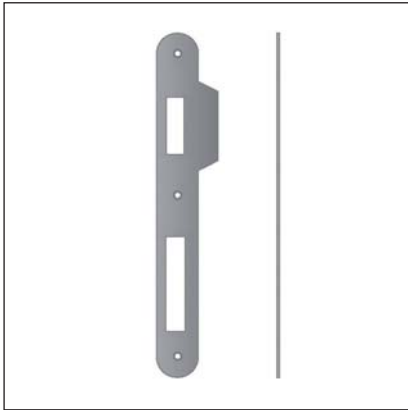


Striker for Sicurezza roller latch, round and square ends, 25 mm width



Description

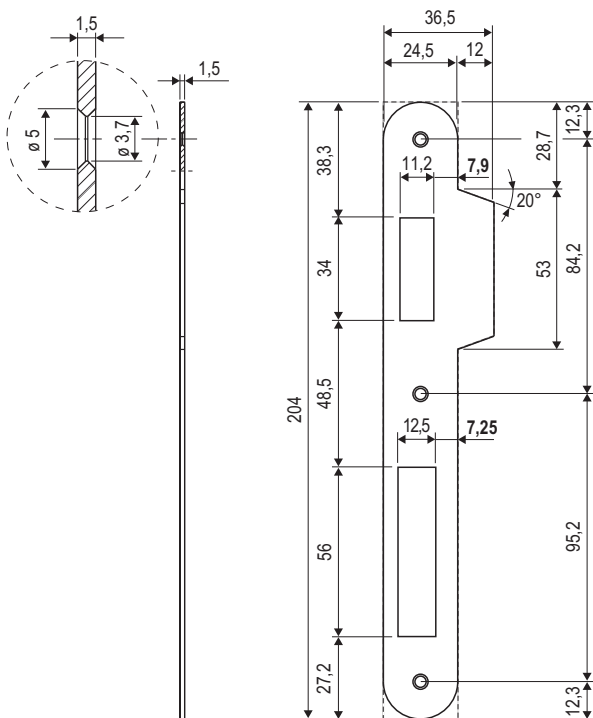
Curved lip to facilitate the closing and reducing the door slamming. Suitable for right and left doors.

Application

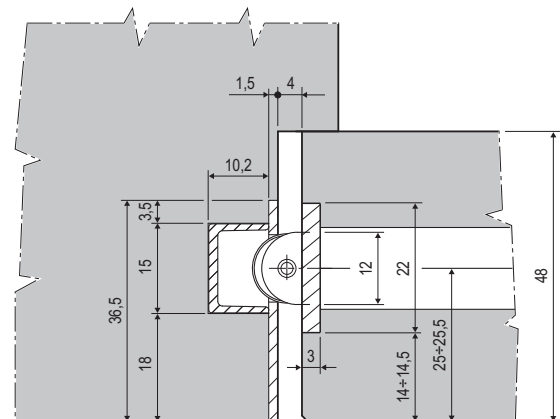
To be coupled with Sicurezza roller latch, on flush and main doors.

Mounting

Install the striker with the lip flush to the frame edge. For fixing, use three screws (2,5x10 mm).



Example of application with a door 48 mm thick



Note. Application executed without considering the thickness of the gaskets.

Order Specification

Material	Article	Description
STEEL	B00590.79.XX	Striker round ends
STEEL	B00590.78.XX	Striker square ends
STAINLESS STEEL	B04590.78.08	Striker square ends

Note. Refer to the price list in force to check the availability of the finishes.